



The ENDURE Network

[www.endure-network.eu]

Scientific support to policy, extension and research

Bernd HOMMEL

Julius Kühn-Institut (JKI), Federal Research Centre for Cultivated
Plants

Institute for Strategies and Technology Assessment

Kleinmachnow

bernd.hommel@jki.bund.de

4th International Symposium "Plant Protection and Plant Health in Europe"
Crop and sector-specific guidelines on IPM. Berlin, 19-21 May 2011



History of the network ENDURE began in 2007



Societal expectations for safe food and environmentally friendly agriculture

Area 5.4.6 - Safer and environmentally friendly production methods and technologies and healthier foodstuffs.
Topic 1 - Reducing the use of plant protection products.

Crop protection: fragmented scientific knowledge and R&D community

EC Contribution 2007 - 2010
11,2 M €

End-users (farmers & advisers) + industry, policy-makers, society)



18 Partners from 10 European countries from 2007

Research

- INRA - FR
- JKI - DE
- RRes - UK
- CIRAD - FR
- CNR - IT
- AGROSCOPE - CH
- WUR: PRI-PPO-LEI - NL
- IHAR - PL

Management

- INRA IT - FR

Collaboration with

- INCO countries

Education

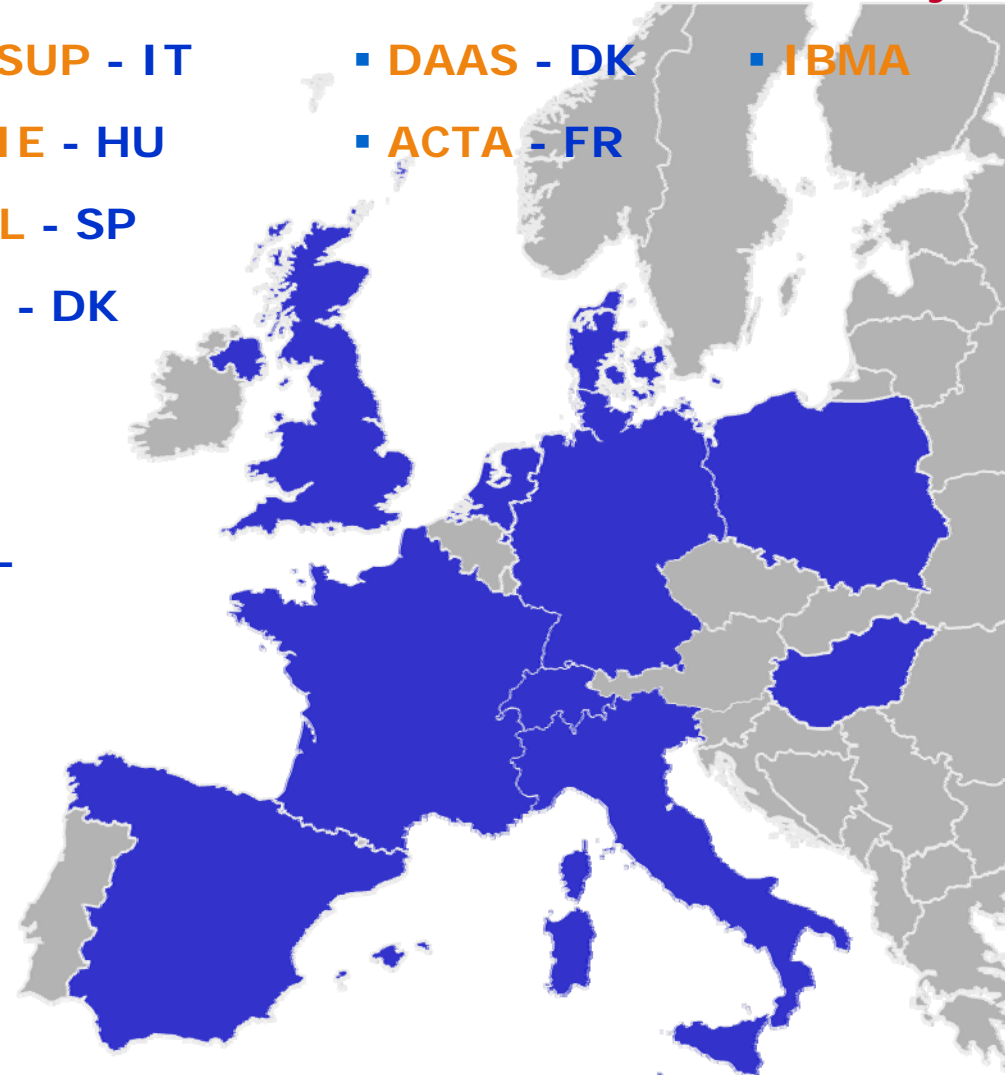
- SSSUP - IT
- SZIE - HU
- UdL - SP
- AU - DK

Extension

- DAAS - DK
- ACTA - FR

Industry

- IBMA



16 Partners from 10 European countries from 2011

Research

- INRA - FR
- JKI - DE
- RRes - UK
- CIRAD - FR
- CNR - IT
- AGROSCOPE - CH
- WUR: PRI-PPO-LEI - NL
- IHAR - PL

Management

- INRA - IT - FR

Collaboration with

- INCO countries

Education

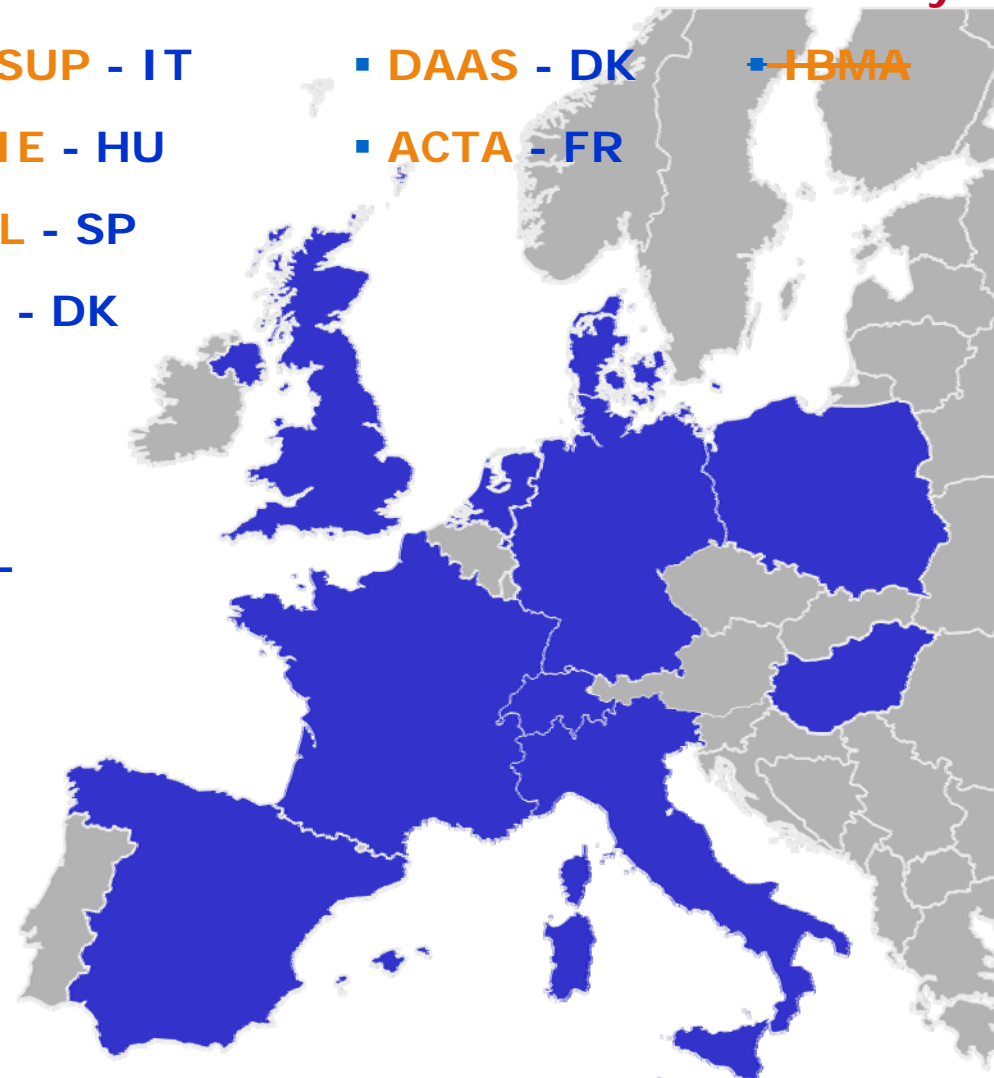
- SSSUP - IT
- SZIE - HU
- UdL - SP
- AU - DK

Extension

- DAAS - DK
- ACTA - FR

Industry

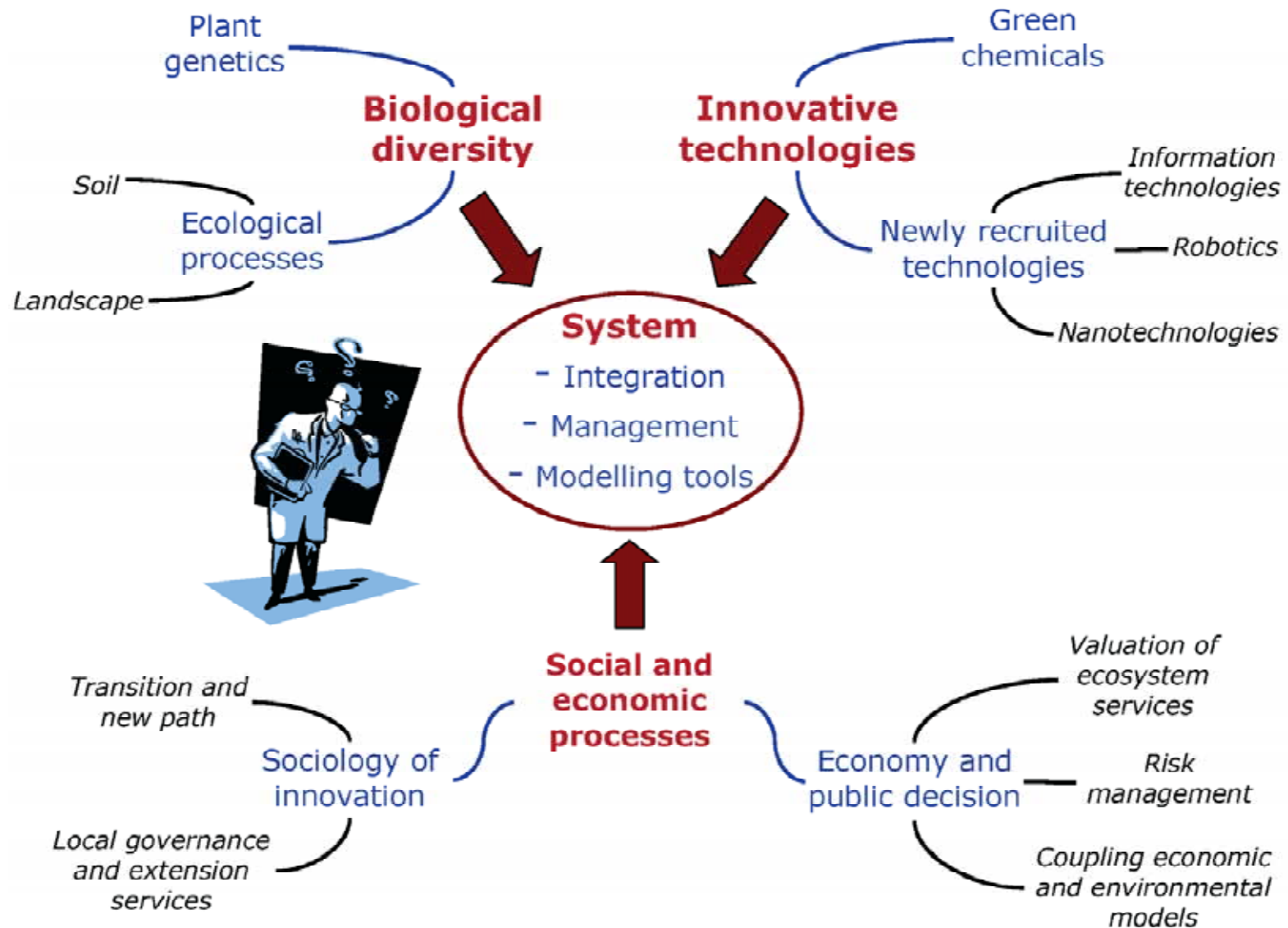
- IBMA



Status after 4 years of collaboration ... in general

- ENDURE contributes in diversifying crop protection
- ENDURE acts as a transnational and multidisciplinary network
- ENDURE represents a transnational standpoint
- IPM is ENDURE's central concept
- ENDURE provides insights into major aspects of IPM strategies
- Advisers are a major target audience for ENDURE
- ENDURE brings scientific support to policy makers
- ENDURE has gained worldwide visibility
- ENDURE adopts a holistic approach
- ENDURE remains as a reference point in IPM beyond 2010

ENDURE adopts a holistic approach for durable strategies

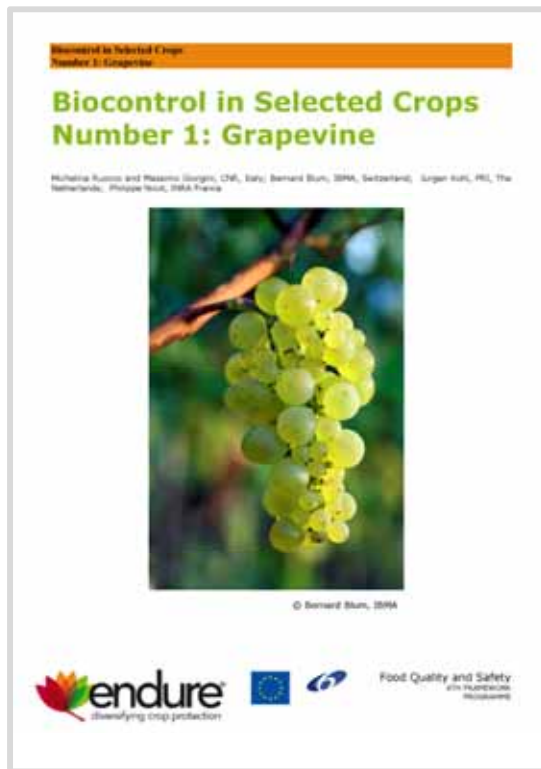


Source: ENDURE Foresight study European Crop Protection in 2030

Results after 4 years of collaboration ...

about 180 deliverables, PUBLICATIONS AND POSTERS, presentations, Leaflets And Brochures, training guide, IPMcardgame, INTERNATIONAL CONFERENCES, meetings with the EC and EP, *field days*, summer schools for PhD students, MOBILITY BETWEEN PARTNERS, *databases*, *h o m e p a g e* , a new project (PURE), and

Online Tools



4th International Symposium "Plant Protection and Plant Health in Europe"
Crop and sector-specific guidelines on IPM. Berlin, 19-21 May 2011



The ENDURE Resource Centre or Virtual Laboratory

The screenshot shows the homepage of the ENDURE Resource Centre. At the top left is the logo with the text "endure® diversifying crop protection". To the right is a banner with the text "RESOURCE CENTRE" and a photograph of people working in a field. Below the banner, there is a navigation menu with links: Home, CE, Collections, Equipment, Labs, Sites, DSS, Methods, Platforms. A search bar is located to the right of the menu, and a language selection dropdown is labeled "Sprache auswählen". Below the menu, there is a paragraph of text: "The ENDURE Resource Centre (ERC) aims to provide easy access to information and resources on Integrated Crop Protection in Europe. The concept of the ERC is to aggregate information on all aspects of crop protection research across Europe and beyond, to act as a portal facilitating research across disciplines and across borders. We welcome feedback, corrections and suggestions from all ENDURE participants and the wider scientific community. Please send any comments or suggestions to Colin Denholm, the ERC technical coordinator at colin.denholm@bbsrc.ac.uk. The ERC was formerly known as the "Virtual Laboratory".

Below the text, there is a link: "Read an interview with team leader Neal Evans on the ENDURE web site".

The main content area is titled "Physical Resources | Online Resources | Latest Information Centre Documents | ERG Twitter". It contains five boxes, each with an image and a title:

- Analytical Equipment**: Laboratory analytical equipment (NMR, mass spec, electron microscopy molecular detection)
- Collections**: Reference collections of arthropods, nematodes, weeds or plant pathogens. DNA/RNA libraries. Germplasm/crops expressing pest resistance traits
- Controlled Environment**: Sophisticated CE/glasshouse facilities
- Experimental Sites**: Sites for controlled and replicated field experiments
- Laboratories**: Laboratories for genomics, metabolomics and/or proteomics research

At the bottom of the page, there is a footer with the ENDURE logo, a "FOLLOW ME ON twitter" button, the European Union flag, the "SIXTH FRAMEWORK PROGRAMME" logo, and the "ERC Status" logo. There is also an RSS feed icon and a link to "Copyright 2005 - 2011 Rothamsted Research | Disclaimer | Log in | Register | Lost password?".

ENDURE's EuroWheat platform

EuroWheat

Home | Project information | Pathogens | Fungicides | Cultivars | Decision support | Public documents

17 February 2010

Login

Login name:

Password:

Login

Forgot your password?

2nd Workshop

Participants at the 2nd EuroWheat workshop at Julius Kuehn Institute, Berlin, Germany, 11th-12th March 2009.

Survey on the use of disease thresholds

New guideline on monitoring of diseases in wheat and a survey on control thresholds used in different countries

[Read more....](#)

Welcome to EuroWheat

EuroWheat is an Internet based platform aiming at collating and displaying host - and pathogen characteristics, and pesticide efficacy on a European scale. Bringing together existing information from national programs and ensuring that these data are in a format, which can be readily understood trans-nationally, are expected to provide significant added value on a European scale. New disease - and resistance data will be published on the platform as soon as possible to support effective disease control, deployment of host resistances and breeding programs.

Present information available are:

- Virulences in the yellow rust population
- Ranking of wheat cultivars for susceptibility to Fusarium and different testing methods
- Disease names in six different languages
- Effectiveness of fungicides ranked in different countries
- Fungicides international trade names
- Fungicide resistance as present in Europe
- Survey on pesticide use and yield responses to fungicides in EU countries
- Yield level and yield losses from specific diseases in 8 EU countries
- Information on disease thresholds and DSSs used in Europe
- Cultural practices impact on disease development
- National documents on disease management

EuroWheat is funded by the ENDURE project and Aarhus University.

Contact

For further information, please contact:
 Lise Nistrup Jørgensen, e-mail: LiseN.Jorgensen@agrsci.dk
 Mogens S. Hovmøller, e-mail: Mogens.Hovmoller@agrsci.dk

Web site provided by Aarhus University, Faculty of Agricultural Sciences, Department of Agroecology and Environment.
 Report technical problems to webmaster: Jens.Grenbech.Hansen.
 Optimized for screen size 1024x768

Comparison of Fungicide efficacy across countries

Find information on the efficacy of the most important compounds against cereal diseases across countries in Europe. [Read more....](#)

In 2009, information will be provided on fungicide resistance cases in specific pathogens by country.

Yellow rust pathotypes in Europe

New data for 2008 have been uploaded.

Most important pathotypes in Europe 1992-2008...
 Evolution of pathotypes over years and countries
 Pathotypes on Europe map

4th International Symposium "Plant Protection and Plant Health in Europe"
 Crop and sector-specific guidelines on IPM. Berlin, 19-21 May 2011



ENDURE's Network of Advisors (ENA): Homepage & Registration

endure
diversifying crop protection

► Contact ENDURE
► Site map

Sign up for ENDURE newsletter
Partners only
Rss

Information for... What is ENDURE? About crop protection ENDURE publications All the news

You are here : [Home](#) > [What is ENDURE?](#) > [ENDURE Tools and Services](#) > [ENDURE Network of Advisors](#)

ENDURE Network of Advisors

A key task for ENDURE is the creation of the ENDURE Network of Advisors (ENA), a forum for sharing knowledge on issues relating to crop production in general and plant protection in particular all over Europe. The forum is being supported by the [ENDURE Information Centre \(ENDURE IC\)](#), the online database which contains a variety of ready-to-use information and experimental results related to Integrated Pest Management (IPM).

Membership of ENA is free of charge and membership is open not only to advisers connected to the ENDURE network but to any advisers (state, private and company) who are directly involved in advising farmers on a daily basis and are interested in sharing their knowledge and experiences with colleagues across Europe.

ENA membership provides advisers with the opportunity to gather knowledge about IPM from international colleagues, thus improving the quality of advice they can offer to farmers. Members will also play an integral part in improving ENDURE IC and through the connection with ENDURE will have a direct link to European pesticide policy.

"One of the main objectives of ENDURE is to ensure that advisers and growers in Europe are able to practically implement any IPM-related recommendations," explained ENA coordinators Jens-Erik Jensen and Rolf Thostrup Poulsen, from the Danish Agricultural Advisory Service (DAAS). "This underlines the need for a group of advisers willing and able to test these recommendations under 'real life' conditions."

ENDURE will be generating an online directory of ENA members and it is expected advisers themselves will become responsible for sustaining the network. It is believed advisers will form smaller networks of specialised advisers, for example those working on potato or fruit production, thus streamlining the work of the network and making it even more relevant for members. DAAS will represent ENDURE in the ENA and ensure that ENDURE's outputs are disseminated to the relevant ENA members.

How to register

Registration for the ENA is simple. First [click here](#), which will open a web page in your internet browser enabling you to enter your e-mail address. When you have done this, click the X to close the window. You will shortly receive an automatic e-mail message giving you a new and personal link which you can use to register as a member of the ENA. This personal link will also allow you to change your registration details should the need arise.


ENA newsletters

- In March 2011, ENA produced its second newsletter for advisers. Download your copy here:
[ENDURE Network of Advisors Newsletter 2 March 2011 \[pdf - 1.10 MB\]](#)
- In September 2010, ENA produced its first newsletter for advisers. Download your copy here:
[ENDURE Network of Advisors Newsletter 1 Sept 2010 \[pdf - 667.38 kB\]](#)

endure Last update: 09/05/2011 - ENDURE © 2009 - Contact ENDURE - Disclaimer



ENDURE's Network of Advisors (ENA): Tools & Communication



**ENDURE Network of Advisors
2nd Newsletter, 25th March 2011**

Dear adviser,

Welcome to the second newsletter for the ENDURE Network of Advisors (ENA)!

During the last few months, several interesting developments regarding ENDURE and advisers have taken place.

This newsletter will give you information on:

- [The ENDURE Conference in Paris in November 2010](#)
- [The ENDURE Information Centre \(EIC\) – now with 1000 documents regarding IPM](#)
- [The ENDURE IPM Training Guide – ready for you to download](#)
- [Inside story: Integrated Pest Management in Denmark – Green Growth and more](#)
- [Subjects for the next newsletter](#)
- [Membership status of ENA](#)
- [Feedback to ENDURE and to ENA](#)

Write the official
ENDURE bio or 1 short
Post on p. 4


The ENDURE Conference in Paris in November 2010

In the first newsletter we announced the ENDURE final conference, and fortunately a significant number of advisers participated in the two days of meetings. Nine advisers received support from ENDURE to participate, and below you may find links to general information about the conference as well as comments by some of the advisers.

The two-day event, which combined plenary sessions, interactive workshops and panel discussions, attracted more than 350 visitors from almost 50 countries to the Eurosites George V conference centre in Paris.

On the conference [website](#) you can find all the different presentations held over the two days. Also, a number of videos were made, and they are freely available on the homepage of [ENEA](#).

At the conference, the importance of advisers was highlighted at several occasions. Firstly, there was a session on ENDURE for trainers and advisers, where the various ENDURE training tools were presented (as an example, see the information about the ENDURE IPM Training Guide later in this newsletter). Also, there was an interactive workshop session, where advisers and trainers had the opportunity not only to see and use the training materials, but also to discuss the future of Integrated Pest Management with equally-minded and others (policy makers, scientists etc.). This discussion was divided in two parts, "the world café" and the "fish bowl". In the world café, the participants had the chance to discuss relevant statements about IPM in small groups (e.g.: Introducing IPM will have a detrimental impact on the farmer's economy). The views obtained from the world café were then used as the introduction to the fishbowl, where four people discussed each topic in plenum, while everyone else listened.



Picture 1 The World Café and Fish Bowl gave all delegates a chance to participate



Training Guide

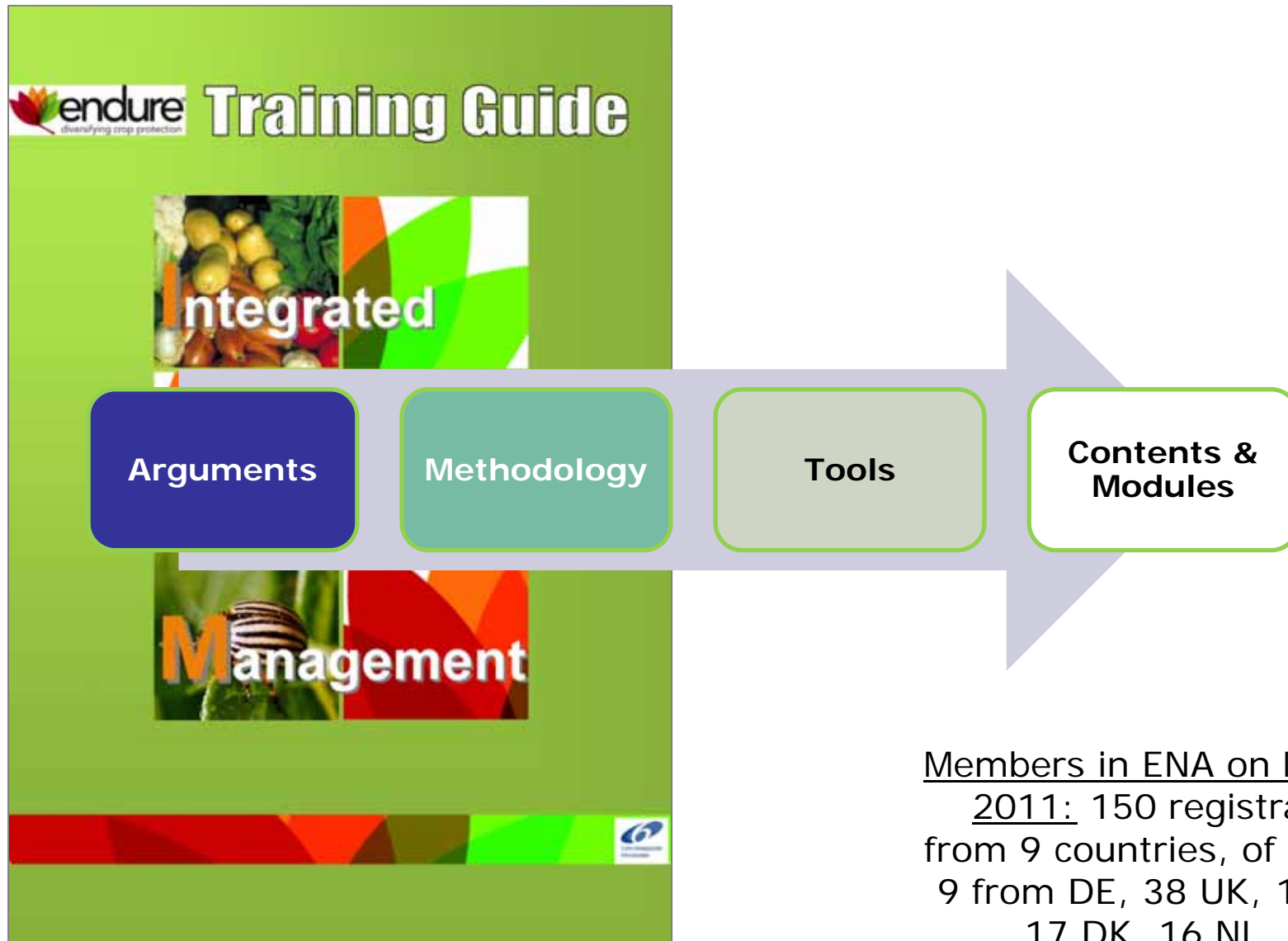


Integrated
Pest
Management



4th International Symposium "Plant Protection and Plant Health in Europe"
Crop and sector-specific guidelines on IPM. Berlin, 19-21 May 2011

ENDURE's Network of Advisors (ENA): Tools & Communication



Members in ENA on March 2011: 150 registrations from 9 countries, of which 9 from DE, 38 UK, 14 FR, 17 DK, 16 NL, 15 ES

ENDURE's www.endureinformationcentre.eu

The screenshot shows the Endure Information Centre website interface. At the top, there is a navigation bar with the Endure logo and the text "diversifying crop protection". Below the logo, there are language options: English, Deutsch, Französisch, Spanisch, Niederländisch, Danisch, and Polnisch. The main content area features four filter boxes: "Kultur" (Weizen, Winter-; Triticum aestivum (winter); TRZAW), "Schaderreger" (Allgemeiner Name; Wissenschaftlicher Name; EPPO Code), "Maßnahme" (Allgemeiner Name), and "Region" (Allgemeiner Name; Überblick; NUTS Code). Below these filters, a search result summary indicates "Berichte (24), Projekte (3) gefunden". A table of results is displayed, showing 24 reports found, with the first 10 shown. The table has columns for Kultur, Schaderreger, Maßnahme, Region, Titel, Wirksamkeit, and Sprache. The first five rows of the table are as follows:

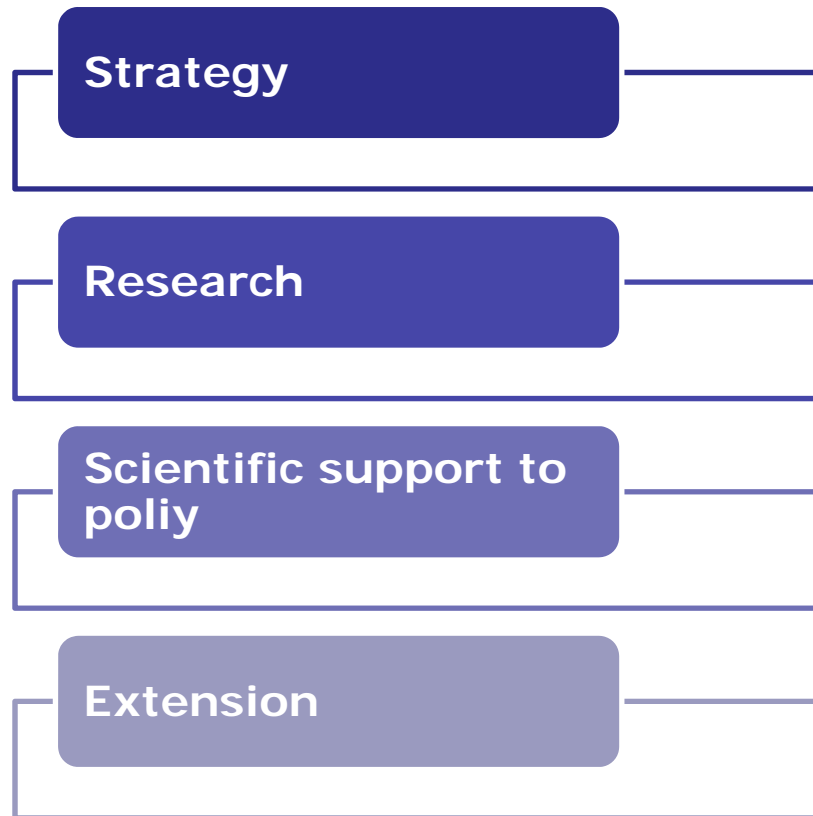
Kultur	Schaderreger	Maßnahme	Region	Titel	Wirksamkeit	Sprache
Weizen, W ...	Bacteria	Präventiv ...	CH	Elektronenbehandlung oder „Elektronenbeiz ...	bereit zur Anwendung	DE, EN
Weizen, W ...	Pflanzen, ...	Pestizidm ...	DK	Strategy against weeds in winter cereals	bereit zur Anwendung	EN
Weizen, W ...	Gelbrost	Winterhärte	DK	Information about the properties of wint ...	experimentell	EN
Weizen, W ...	Pflanzen, ...	eggen	DK	Mechanical weed control in winter cereals ...	bereit zur Anwendung	EN
Weizen, W ...	Tiere	tolerante ...	DK	Organic growing instructions for winter w ...	bereit zur Anwendung	EN

4th International Symposium "Plant Protection and Plant Health in Europe"
Crop and sector-specific guidelines on IPM. Berlin, 19-21 May 2011



ENDURE will remain as a reference point in IPM beyond 2010

Objectives of ENDURE

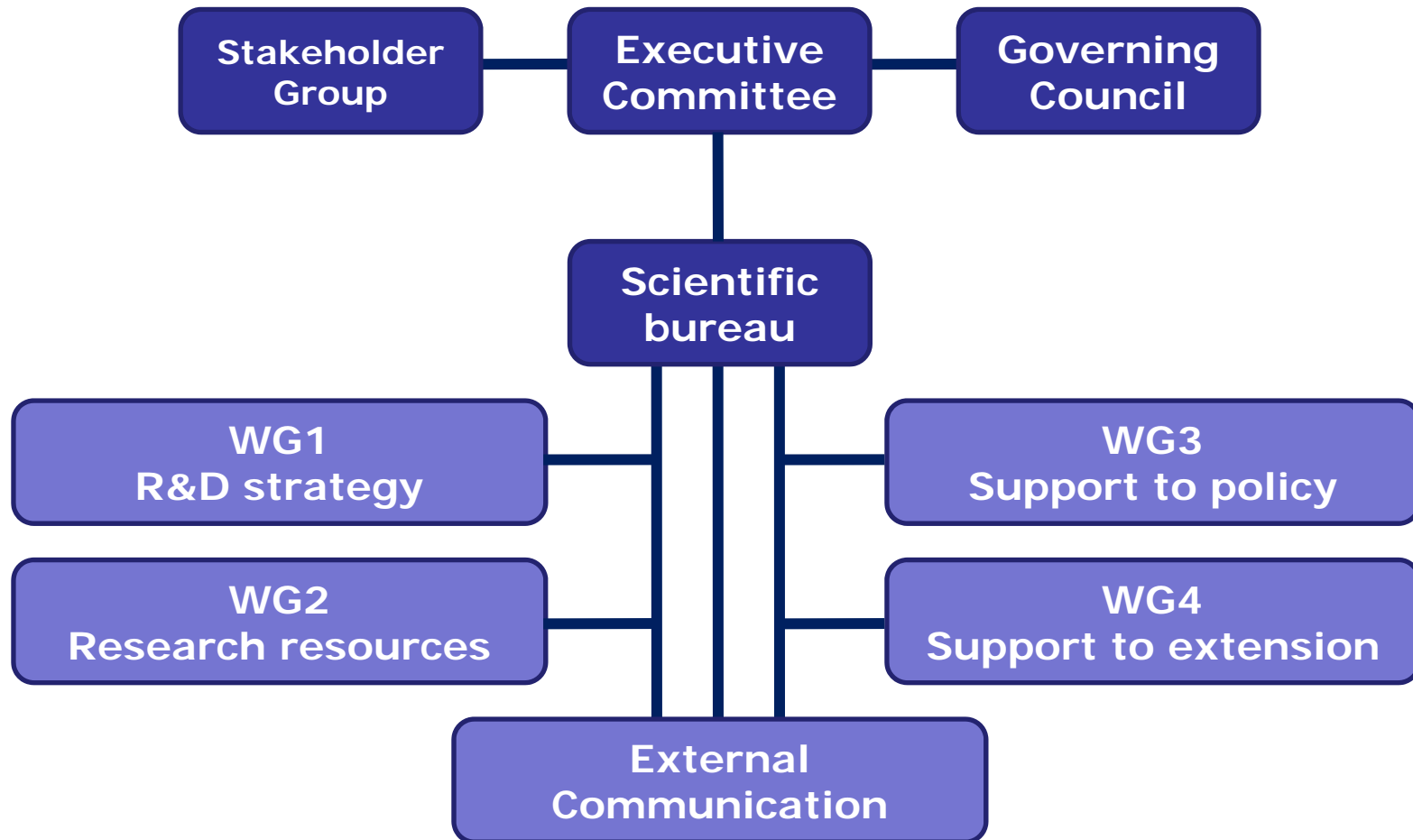


- Keeping alive partnership & creating synergies from national efforts.
- Maintaining and updating/upgrading existing tools.
- Acting as a central point of scientific and technical reference in IPM.
- Providing European-level support to extension, policy and research.
- Inviting new partners to join the network.

ENDURE's potential target groups

- EU-level clients (DGs, EPs) → particularly regarding the implementation of the parts of the Framework Directive that relate to IPM (article 14).
- National authorities managing the implementation of the Framework Directive.
- National level advisory services → members of ENA.
- European level stakeholders.
- Each partner in ENDURE.

Structure & governance



Meetings in 2011 with main contributions of ENDURE

“Sustainable use of pesticides and integrated pest management in East-Central Europe and the Baltics”. A conference under the aegis of the Polish presidency of the EU and financially supported by Ministry of Agriculture and Rural Development of Poland.

Radzików, Poland, 4-6 September 2011

“Robustness of cropping systems and anticipation strategies vis-à-vis important pest species and climate change: research and policy implications”. A collaboration with the Institute for Prospective Technological Studies (IPTS) of the European Commission's Joint Research Centre

Seville, End of 2011

SCAR Collaborative Working Group on IPM for reduction of pesticide risks and use.

Brussels, May and November 2011

DG SANCO's Thematic Strategy Expert Group

IPM principles: More research or only implementation?

Source: The ENDURE Conference in Paris, 11-2010



83x yellow, 95x green

Top 3

New tools needed:

- Principle 3: warnings, forecasts, thresholds
- Principle 6: correct dosages, reduced dosages
- Principle 4: non-chemical alternatives

Implementation needed:

- Principle 1: crop rotation
- Principle 1: resistant cultivars
- Principle 1: protecting beneficials



Thank you very much

and

welcome at

www.endure-network.eu